



Analog

Dome

## HCV-6080R

1080p Analog HD Vandal-Resistant IR Dome Camera



### Key Features

- Full HD resolution
- 0.11 Lux@F1.6 (Color), 0 Lux (B/W : IR LED on)
- 3.2 ~ 10mm (3.1x) motorized V/F lens
- Day & Night (ICR), WDR (120dB)
- SSNRIV, Motion detection
- IR viewable length 30m, IP66, IK10
- Transmission distance max.500m
- Easy Installation (Plug & play), Dual power

### Compatible Accessories (Optional)



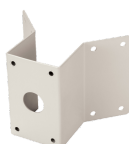
SBP-300CM



SBV-136B



SBP-300PM



SBP-300KM



SBP-300WM1



SBP-300LM



SBP-137WM1



SBP-390WM2



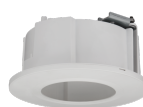
SBP-300WM



SPB-VAN72



SBP-300B



SHD-1408FW



SBP-301HM5



SBP-300NB

## HCV-6080R

1080p Analog HD Vandal-Resistant IR Dome Camera



### Specifications

Video	
Imaging Device	1/2.8" 2MP CMOS
Resolution	1920x1080
Max. Framerate	30fps / 25fps(60Hz / 50Hz)
Min. Illumination	Color: 0.11Lux(F1.6, 30IRE) BW: 0Lux(IR LED on)
Video Out	BNC(AHD / TVI / CVI / CVBS Selectable)
Video Transmission Distance	500m(5C2V Coaxial Cable)
Lens	
Focal Length (Zoom Ratio)	3.2~10mm(3.1x) motorized varifocal
Max. Aperture Ratio	F1.6
Angular Field of View	H: 110.2°(Wide) ~ 32°(Tele) / V: 55.4°(Wide) ~ 18°(Tele) / D: 128.4°(Wide) ~ 36.6°(Tele)
Min. Object Distance	0.5m(1.64ft)
Focus Control	Manual
Lens Type	DC auto iris
Pan / Tilt / Rotate	
Pan / Tilt / Rotate Range	0° ~ 350° / 0° ~ 67° / 0° ~ 355°
Operational	
Camera Title	Displayed up to 15 characters
Day & Night	Auto(ICR)
Backlight Compensation	BLC, HLC, WDR
Wide Dynamic Range	120dB
Digital Noise Reduction	SSNRIV
Defog	Support
Motion Detection	4ea
Privacy Masking	8ea, rectangular zones
Gain Control	Low / Middle / High / Very High
White Balance	ATW / AWC / Manual / Indoor / Outdoor
Electronic Shutter Speed	1 ~ 1/12,000sec
Video Rotation	H-Rev / V-Rev
Analytics	Motion detection
Alarm I/O	MD output 1ea
Alarm Triggers	Analytics
Alarm Events	Alarm output
IR Viewable Length	30m(98.43ft)

Design and specifications are subject to change without notice. The latest product information / specification can be found at [HanwhaVision.com](http://HanwhaVision.com).  
Hanwha Vision is formerly known as Hanwha Techwin.

Coaxial Protocol

ACP(AHD Coax Protocol), TCP(TVI Coax Protocol), CCP(CVI Coax Protocol)  
CVBS: Pelco-C(Coaxitron)

---

## Environmental & Electrical

Operating Temperature / Humidity	-30°C ~ +55°C(-22°F ~ +131°F) / Less than 90% RH
----------------------------------	--

Certification	IP66, IK10
---------------	------------

Input Voltage	24VAC, 12VDC
---------------	--------------

Power Consumption	Max 5.8W
-------------------	----------

---

## Mechanical

Color / Material	Ivory / Aluminum
------------------	------------------

Product Dimensions / Weight	Ø137x106.1mm(5.39x4.18"), 725g(1.59 lb)
-----------------------------	---

## HCV-6080R

1080p Analog HD Vandal-Resistant IR  
Dome Camera



CAD

Unit:mm [inch]

