



Analog

Dome

HCV-6070R

1080p Analog HD Vandal-Resistant IR Dome Camera



Key Features

- Full HD resolution
- 0.11 Lux@F1.6 (Color), 0 Lux (B/W : IR LED on)
- 3.2 ~ 10mm (3.1x) V/F lens
- Day & Night (ICR), WDR (120dB)
- SSNRIV, Motion detection
- IR viewable length 30m, IP66, IK10
- Transmission distance max.500m
- Easy Installation (Plug & play), Dual power

Compatible Accessories (Optional)



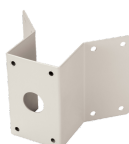
SBP-300CM



SBV-136B



SBP-300PM



SBP-300KM



SBP-300WM1



SBP-300LM



SBP-137WM1



SBP-390WM2



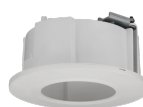
SBP-300WM



SPB-VAN72



SBP-300B



SHD-1408FW



SBP-301HM5



SBP-300NB

HCV-6070R

1080p Analog HD Vandal-Resistant IR Dome Camera



Specifications

Video

| | |
|-----------------------------|--|
| Imaging Device | 1/2.8" 2MP CMOS |
| Resolution | 1920x1080 |
| Max. Framerate | 30fps / 25fps(60Hz / 50Hz) |
| Min. Illumination | Color : 0.11Lux(F1.6, 30IRE) BW : 0Lux(IR LED on) |
| Video Out | BNC(AHD / TVI / CVI / CVBS Selectable) |
| Video Transmission Distance | 500m(5C2V Coaxial Cable) |

Lens

| | |
|---------------------------|---------------------------------|
| Focal Length (Zoom Ratio) | 3.2~10mm(3.1x) manual varifocal |
| Max. Aperture Ratio | F1.6 |
| Min. Object Distance | 0.5m(1.64ft) |
| Focus Control | Manual |
| Lens Type | DC auto iris |

Pan / Tilt / Rotate

| | |
|---------------------------|----------------------------------|
| Pan / Tilt / Rotate Range | 0° ~ 350° / 0° ~ 67° / 0° ~ 355° |
|---------------------------|----------------------------------|

Operational

| | |
|--------------------------|---|
| Camera Title | Displayed up to 15 characters |
| Day & Night | Auto(ICR) |
| Backlight Compensation | BLC, HLC, WDR |
| Wide Dynamic Range | 120dB |
| Digital Noise Reduction | SSNRIV |
| Defog | Support |
| Motion Detection | 4ea |
| Privacy Masking | 8ea, rectangular zones |
| Gain Control | Low / Middle / High / Very High |
| White Balance | ATW / AWC / Manual / Indoor / Outdoor |
| Electronic Shutter Speed | 1 ~ 1/12,000sec |
| Video Rotation | H-Rev / V-Rev |
| Analytics | Motion detection |
| Alarm I/O | MD output 1ea |
| Alarm Triggers | Analytics |
| Alarm Events | Alarm output |
| IR Viewable Length | 30m(98.43ft) |
| Coaxial Protocol | ACP(AHD Coax Protocol), TCP(TVI Coax Protocol), CCP(CVI Coax Protocol) CVBS : Pelco-C(Coaxitron) |

Design and specifications are subject to change without notice. The latest product information / specification can be found at HanwhaVision.com.

Hanwha Vision is formerly known as Hanwha Techwin.

Environmental & Electrical

| | |
|----------------------------------|--|
| Operating Temperature / Humidity | -30°C ~ +55°C(-22°F ~ +131°F) / Less than 90% RH |
|----------------------------------|--|

| | |
|---------------|------------|
| Certification | IP66, IK10 |
|---------------|------------|

| | |
|---------------|--------------|
| Input Voltage | 24VAC, 12VDC |
|---------------|--------------|

| | |
|-------------------|----------|
| Power Consumption | Max 4.2W |
|-------------------|----------|

Mechanical

| | |
|------------------|------------------|
| Color / Material | Ivory / Aluminum |
|------------------|------------------|

| | |
|-----------------------------|---|
| Product Dimensions / Weight | Ø137x106.1mm(5.39x4.18"), 715g(1.58 lb) |
|-----------------------------|---|

HCV-6070R

1080p Analog HD Vandal-Resistant IR
Dome Camera



CAD

Unit:mm [inch]

